

LEGEND

Allocations

- A1 - Cross Borough Link Road
- A1 - Potential Extension to Cross Borough Link Road
- A2 - Penwortham Bypass Protected Route
- A2 - Penwortham Bypass Potential Alternative Route
- B2 - Village Development
- C1/C2 - Major Sites for Development - Residential Led
- C3/C4 - Major Sites for Development - Employment Led
- D1 - New Residential Allocation
- Residential with Current Applicant
- Residential with Permission
- E1 - Allocation of Employment Land
- E2 - Protection of Employment Areas and Sites
- G1 - Green Belt
- G3 - Safeguarded Land
- G4 - Protected Open Land
- G5 - Areas of Separation
- G7 - Green Infrastructure - Existing Provision
- G9 - Worden Park Extension
- G11 - Green Corridors
- H1 - Land Reserved for New School
- Wildlife Corridors
- Geological Heritage Sites
- Biological Heritage Sites
- Local Nature Reserves
- Flood Zone
- SSSIs
- Borough Boundary

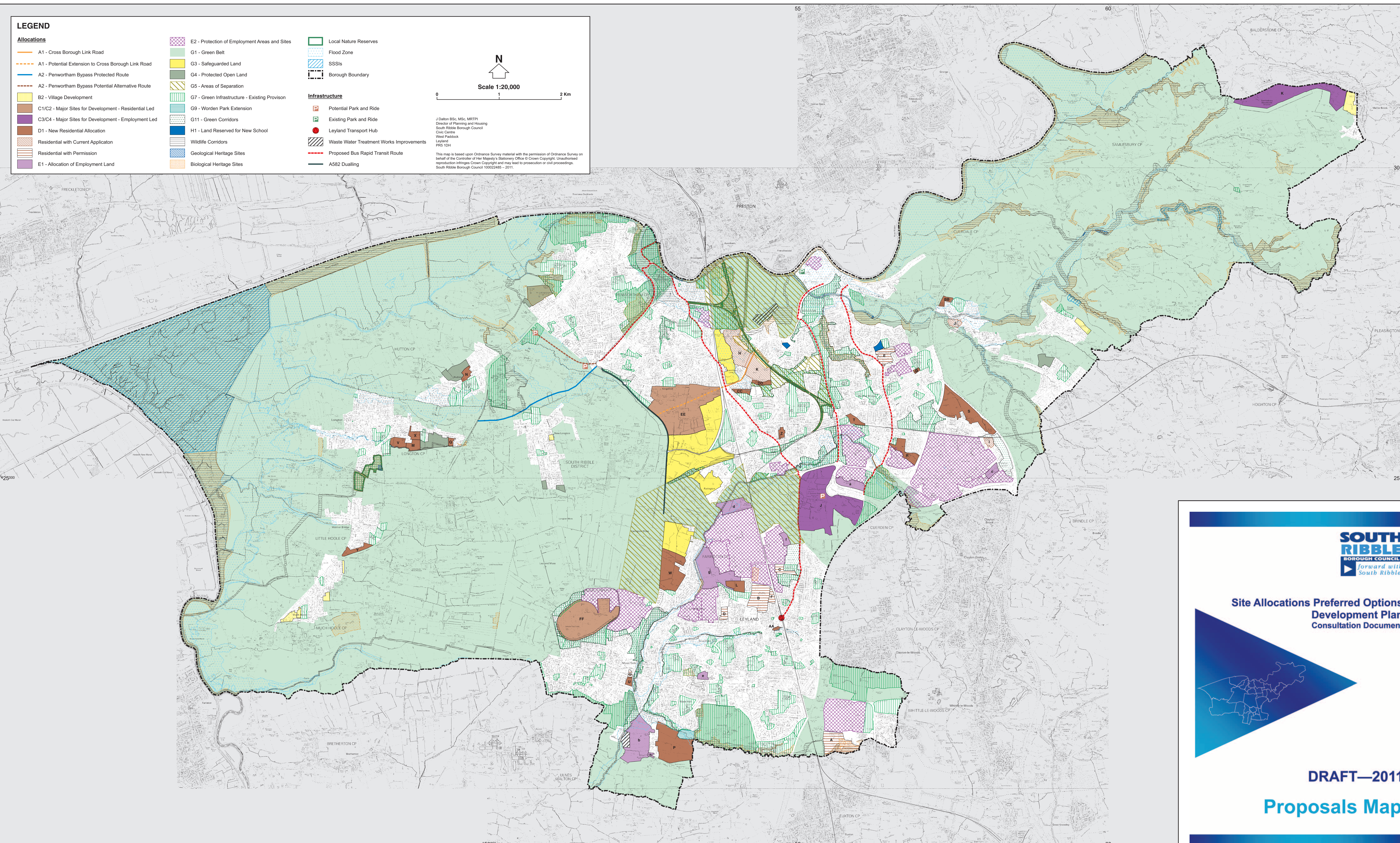
Infrastructure

- Potential Park and Ride
- Existing Park and Ride
- Leyland Transport Hub
- Waste Water Treatment Works Improvements
- Proposed Bus Rapid Transit Route
- A582 Dualling

Scale 1:20,000

J Dillon BSc, MSc, MRTPI
 Director of Planning and Housing
 South Ribble Borough Council
 Civic Centre
 West Padlock
 Leyland
 PR5 1DH

This map is based upon Ordnance Survey material with the permission of Ordnance Survey on behalf of the Controller of Her Majesty's Stationary Office © Crown Copyright. Unauthorised reproduction infringes Crown Copyright and may lead to prosecution or civil proceedings. South Ribble Borough Council 10022485 - 2011.



SOUTH RIBBLE BOROUGH COUNCIL
forward with South Ribble

**Site Allocations Preferred Options
 Development Plan
 Consultation Document**

DRAFT—2011

Proposals Map